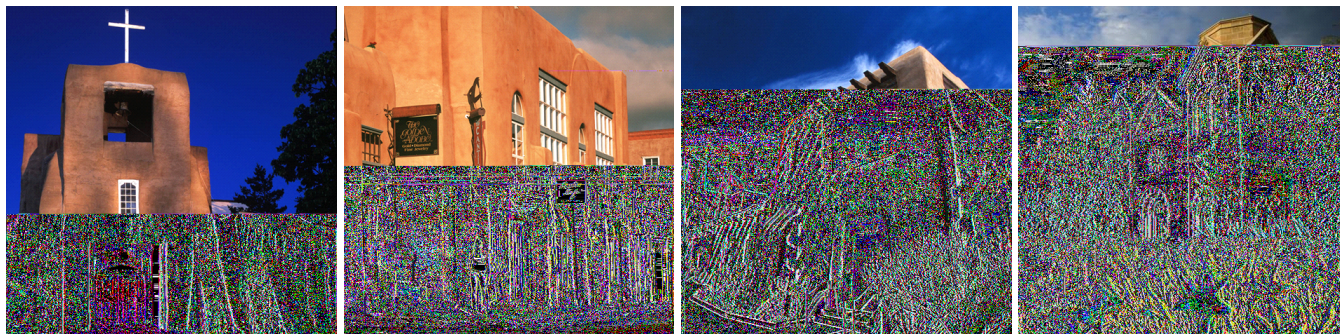


# NOLTA 2013 *2013 International Symposium on Nonlinear Theory and its Applications* Santa Fe, USA, September 8–12, 2013



## SYMPOSIUM COMMITTEE

### General Co-Chairs

Vakhtang Putkaradze  
(University of Alberta)

Takashi Hikihara  
(Kyoto University)

### Technical Program Co-Chairs

Juan M. Restrepo  
(University of Arizona)

Yuzuru Sato  
(Hokkaido University)

### Technical Program Secretary

Kohei Yamasue  
(Tohoku University)

### Special Session Co-Chairs

Jeffrey Moehlis  
(UCSB)

Masayuki Sato  
(Kanazawa University)

### Finance Chair

Yuichi Tanji  
(Kagawa University)

### Finance Secretary

Ken'ichi Fujimoto  
(Tokushima University)

### Publication Chair

Hiroyuki Torikai  
(Osaka University)

### Publication Co-Secretaries

Masayuki Kimura  
(The University of Shiga Prefecture)

Yuichi Yokoi  
(Nagasaki University)

<http://www-lab23.kuee.kyoto-u.ac.jp/nolta2013>

### Publicity Chair

Haruna Matsushita  
(Kagawa University)

### General Secretary

Yoshihiko Susuki  
(Kyoto University)

## CALL FOR PAPERS

The 2013 International Symposium on Nonlinear Theory and its Applications (NOLTA 2013) will be held at **Santa Fe, USA, September 8–12, 2013**. The objective of the symposium is to provide a forum for exchange of the latest results related to nonlinear theory and its applications. Papers describing original results in all aspects of nonlinear theory and its applications are invited. Topics include, but are not limited to:

|                            |                               |                          |
|----------------------------|-------------------------------|--------------------------|
| Chaos and Bifurcations     | Chaotic Neural Networks       | Circuits and Systems     |
| Oscillations               | Cellular Neural Networks      | Self-Validating Numerics |
| Synchronization            | Learning and Memory           | Modeling and Simulations |
| Coupled Oscillators        | Prediction and Identification | Large-Scale Networks     |
| Communications             | Image and Signal Processing   | Analog and Digital ICs   |
| Chua's Circuits            | Neuro Dynamics                | Distributed Networks     |
| Control                    | Evolutionary Computation      | Power Systems            |
| Complex Systems            | Optimization                  | Robotics                 |
| Fractals                   | Fuzzy                         | Optics                   |
| Solitons                   | Biocybernetics                | Chemistry                |
| Applied Mathematics        | Economics                     | Physics                  |
| Biomedical Data Processing | Biomedical Engineering        | Bioinformatics           |
| Complex Networks           | Computational Neuroscience    | Social Dynamics          |

### Organizer:

Research Society of Nonlinear Theory and its Applications, IEICE

### In Cooperation With:

Technical Group on Nonlinear Problems, IEICE  
Technical Group on Circuits and Systems, IEICE  
IEEE Circuits and Systems Society

### Paper Submission:

Authors are invited to submit full papers in PDF format via the web site:  
<http://www-lab23.kuee.kyoto-u.ac.jp/nolta2013>

Only electronic submissions will be accepted. Corresponding authors of accepted papers will be requested to submit a 4-page final paper for the symposium proceedings.

### Special Sessions:

NOLTA 2013 welcomes proposals for special sessions. Proposals will be evaluated based on the timeliness and the scientific quality of the topic. Notification of acceptance will be sent to the organizers by **February 15, 2013**. Please submit proposals via email by **January 15, 2013** to:

NOLTA 2013 Special Session Proposal E-mail: [nolta2013-SS@dove.kuee.kyoto-u.ac.jp](mailto:nolta2013-SS@dove.kuee.kyoto-u.ac.jp)

### Student Paper Award:

The NOLTA 2013 Symposium Committee will select a small number of papers to receive the Student Paper Award. Candidates are nominated by TPC of NOLTA 2013 before the Symposium. The Candidates are asked to present the paper at the Symposium. The selection is based on the quality, originality, and clarity of the paper and the presentation.

### Author's Schedule:

|  |                       |
|--|-----------------------|
| Deadline for Special Session proposals:                | January 15, 2013      |
| Notification of acceptance for Special Sessions:       | February 15, 2013     |
| Submission of full papers for Regular Sessions:        | March 1, 2013         |
|  | <b>March 15, 2013</b> |
| Notification of acceptance for Regular Session Papers: | May, 2013             |
| Deadline for submission of all camera-ready papers:    | June, 2013            |

For more information about NOLTA: